

FORMER BANK SPACE FOR LEASE

4424 Montgomery Avenue · Bethesda, MD 20814

Building Information:

Building Size: 11,633 SF

3 floors + basement level

1 elevator

Walkability Score: 90/100

AVAILABLE SPACE:

Suite 100: 1,516 SF

(formerly PNC Bank)

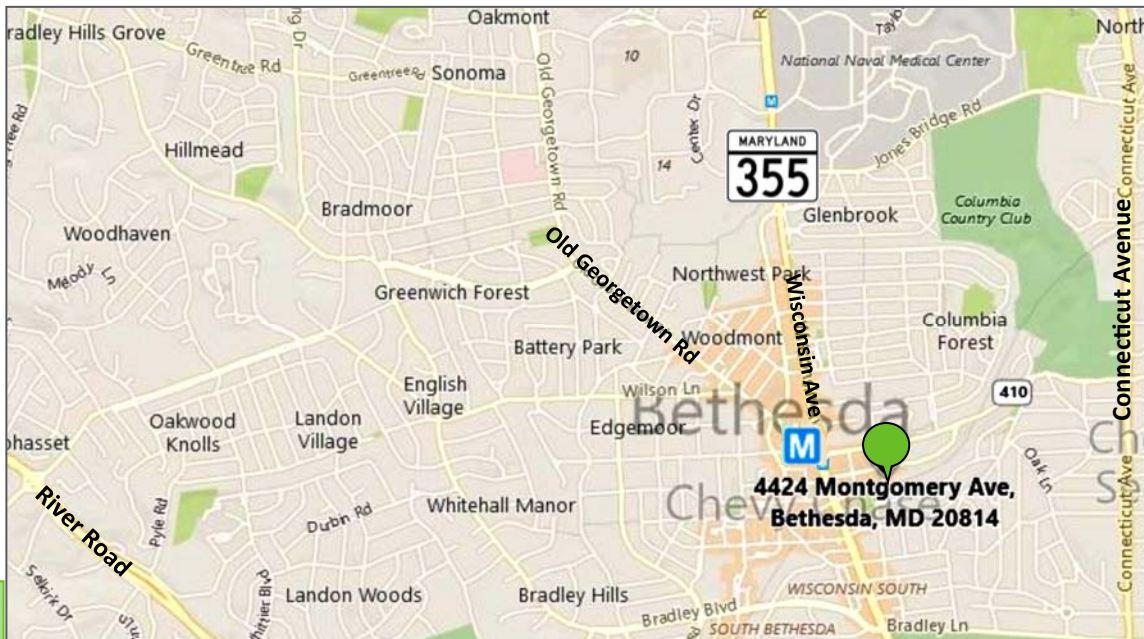
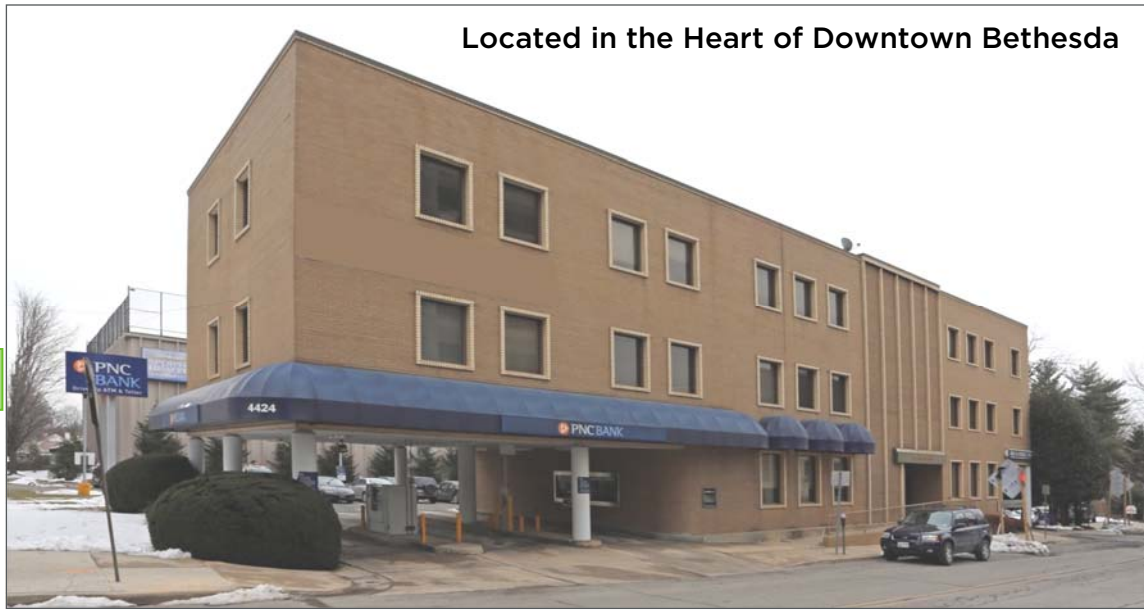
Available 7/1/2020

- 3 drive-thru lanes, including ATM
- Pylon & awning signage available
- Includes 8 reserved parking spaces
- Flexible or short term leases available
- Rental rate negotiable

LOCATION FEATURES:

- Located next to Sport & Health (health club)
- 2 blocks off Wisconsin Avenue
- Minutes from an abundance of shopping, dining and more
- 5 minute walk (0.3 miles) to Bethesda Metro Station
- 0.2 miles to Old Georgetown Road
- less than a mile to Connecticut Avenue
- less than 4 miles to I-270 & I-495

Located in the Heart of Downtown Bethesda



For Leasing Opportunities Contact:



Genevieve Woche

Office: 301.795.1455

GWoche@PromarkPartners.com

451 Hungerford Drive · Suite 700 · Rockville, MD 20850 • 301.795.1400 • www.PROMARKPARTNERS.com

The materials provided herein are for informational purposes only and are not intended to constitute an offer or solicitation. Although information contained herein is from sources deemed reliable, such information has not been verified and is submitted subject to errors, omissions, change of price, withdrawal or further change without notice.

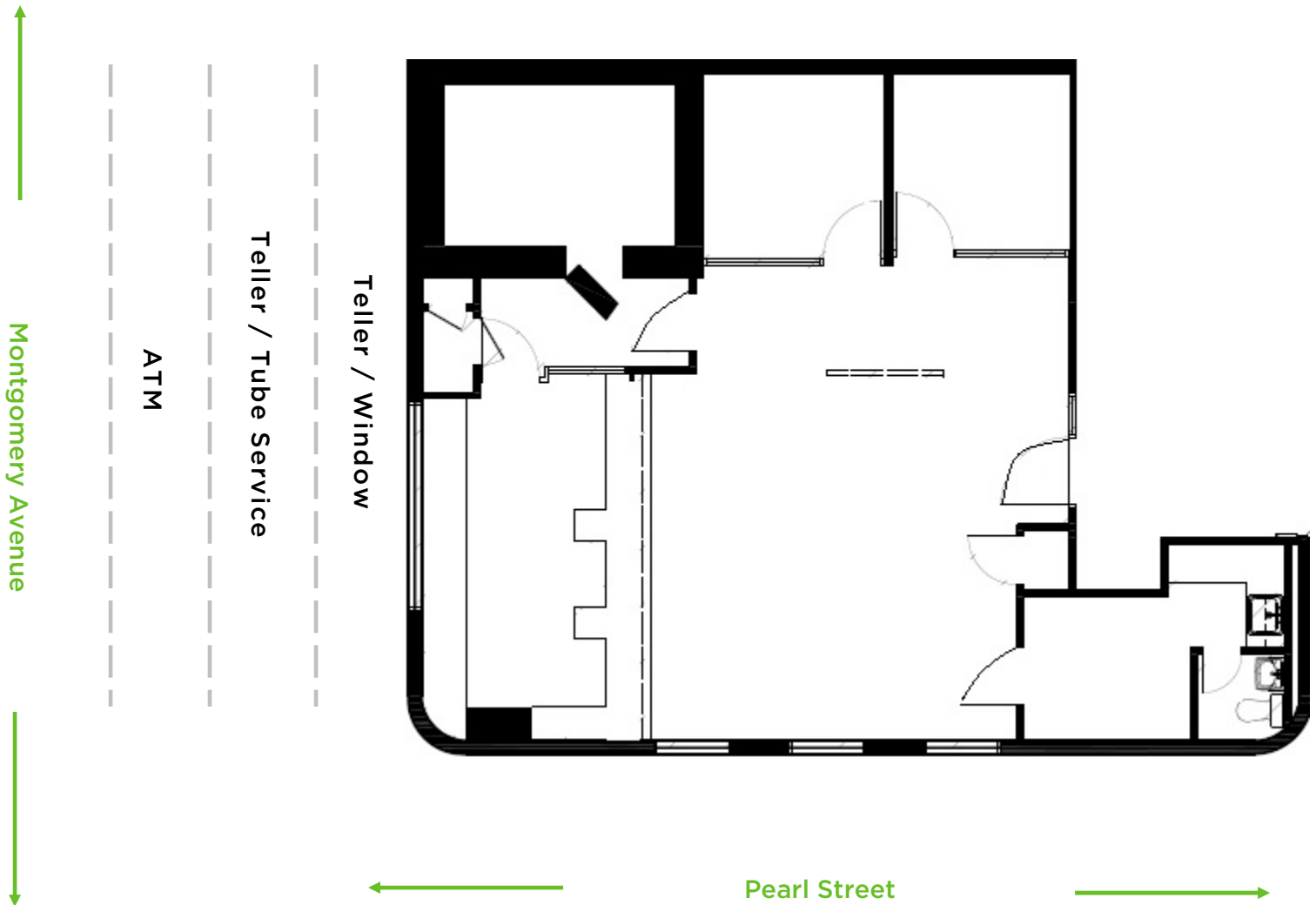


FORMER BANK SPACE FOR LEASE

4424 Montgomery Avenue · Bethesda, MD 20814

• FLOOR PLAN

Suite 100 · 1,516 SF (formerly PNC Bank)



For Leasing Opportunities Contact:



Genevieve Woche
Office: 301.795.1455
GWoche@PromarkPartners.com

451 Hungerford Drive · Suite 700 · Rockville, MD 20850 • 301.795.1400 • www.PROMARKPARTNERS.com

The materials provided herein are for informational purposes only and are not intended to constitute an offer or solicitation. Although information contained herein is from sources deemed reliable, such information has not been verified and is submitted subject to errors, omissions, change of price, withdrawal or further change without notice.