

### Building Information:

- Building Size: 11,633 SF
- 3 floors + basement level
- 1 elevator

### AVAILABLE SPACE:

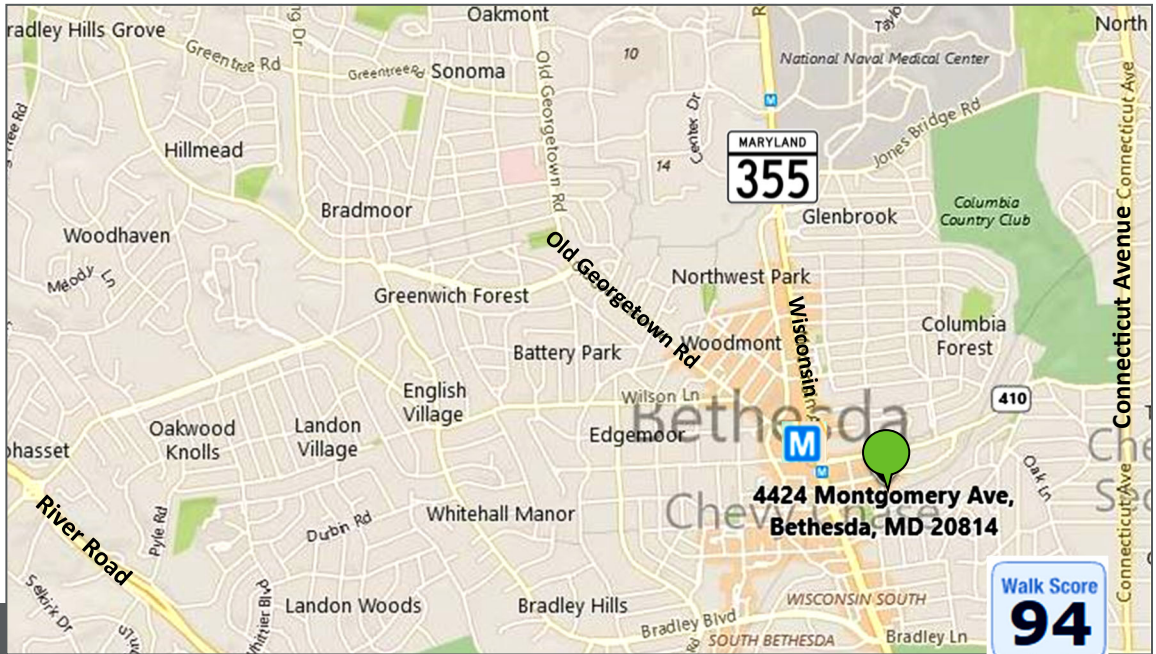
- Suite 102: 492 SF
- Suite 202: 283 SF
- Suite 300: 1,492 SF
- Suite 307: 780 SF

- Includes free reserved parking at ratio of 1 per 500 sf
- 1-year or 2-year short term lease; month-to-month thereafter
- Rental rate: \$29.75 psf, full service

### LOCATION FEATURES:

- Located next to Sport & Health (health club)
- 2 blocks off Wisconsin Avenue
- Minutes from an abundance of shopping, dining and more
- 5 minute walk (0.3 miles) to Bethesda Metro Station

Located in the Heart of Downtown Bethesda  
**Short Term Leases Available**



- 0.2 miles to Old Georgetown Road
- less than a mile to Connecticut Avenue
- less than 4 miles to I-270 & I-495

### For Leasing Opportunities Contact:

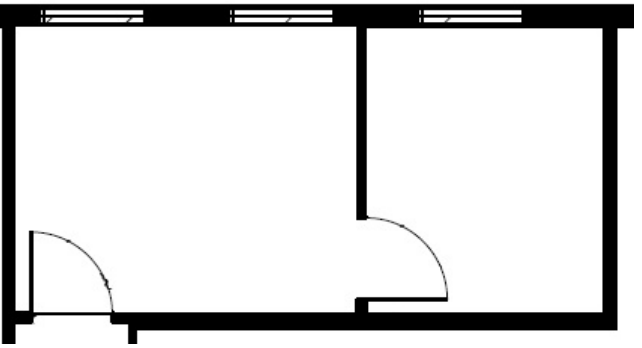
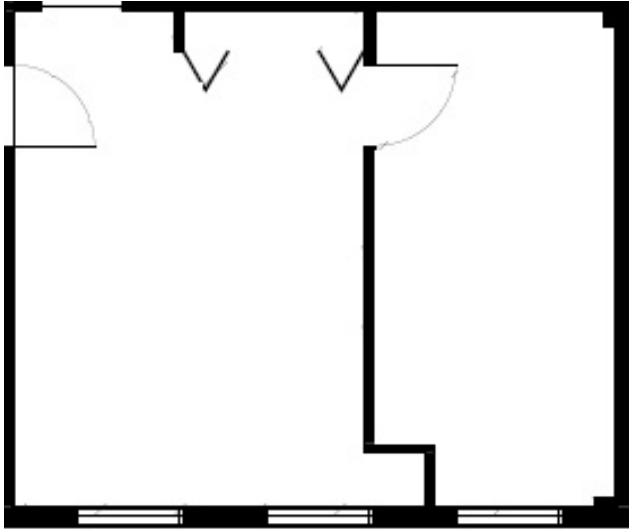
**Bobby Kravitz** | Office: 301.795.1457 | [BKravitz@PromarkPartners.com](mailto:BKravitz@PromarkPartners.com)

# OFFICE SPACE FOR LEASE

4424 Montgomery Avenue · Bethesda, MD 20814

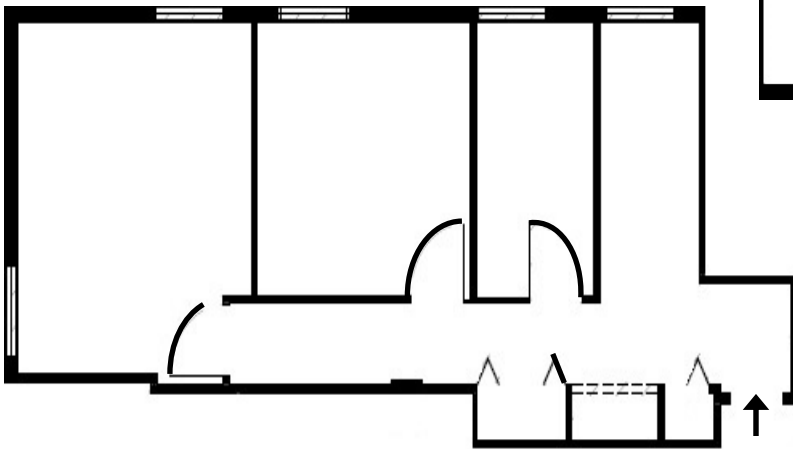
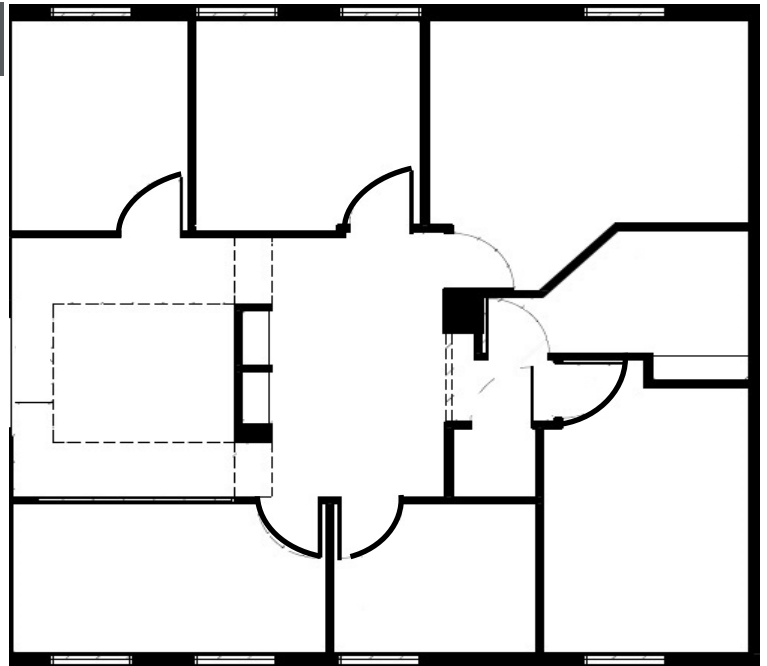
• FLOOR PLANS

Suite 102 · 492 SF



Suite 202 · 283 SF

Suite 300 · 1,492 SF



Suite 307 · 780 SF



451 Hungerford Drive · Suite 700 · Rockville, MD 20850 • 301.795.1400 • PROMARKPARTNERS