

## Building Information:

Building Size: 11,633 SF

3 floors + basement level

1 elevator

## AVAILABLE SPACE:

Suite 101: 437 SF

Suite 204: 1,386 SF

Suite 300: 1,492 SF

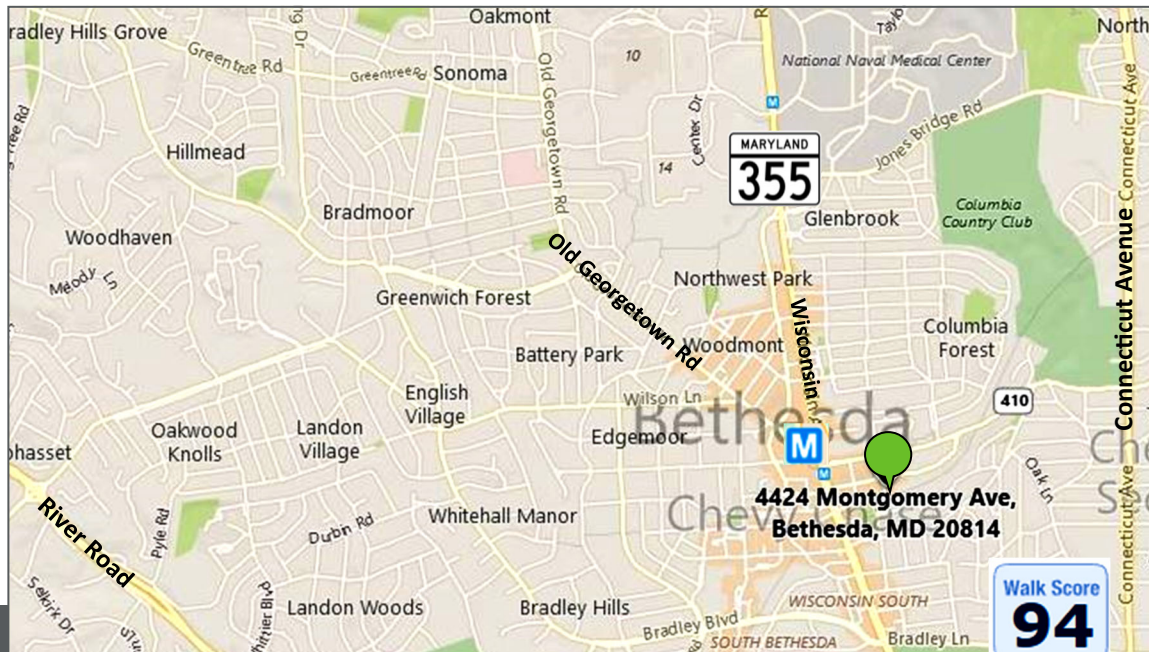
- Includes free reserved parking at ratio of 1 / 500 sf
- 1-year lease; month-to-month thereafter
- Rental rate: \$29.75 psf, full service

## LOCATION FEATURES:

- Located next to Onelife Fitness
- 2 blocks off Wisconsin Avenue
- Minutes from an abundance of shopping, dining and more
- 5 minute walk (0.3 miles) to Bethesda Metro Station
- 0.2 miles to Old Georgetown Road
- less than a mile to Connecticut Avenue
- less than 4 miles to I-270 & I-495

Located in the Heart of Downtown Bethesda

Short Term Leases Available



For Leasing Opportunities Contact:

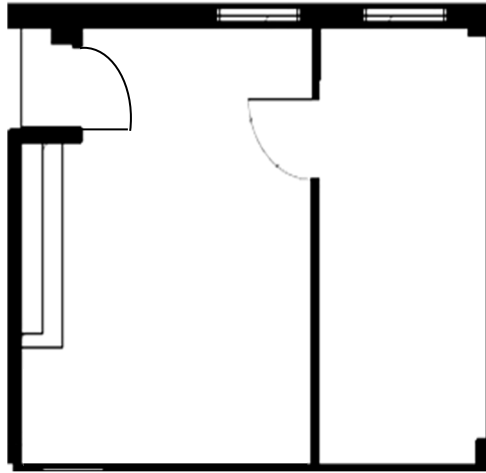
**Bobby Kravitz** | Office: 301.795.1457 | [BKravitz@PromarkPartners.com](mailto:BKravitz@PromarkPartners.com)

# OFFICE SPACE FOR LEASE

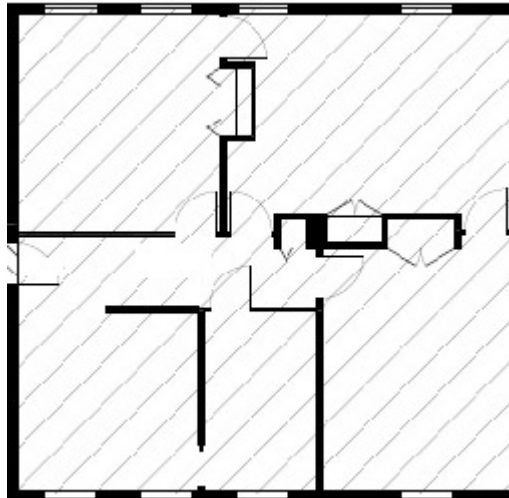
4424 Montgomery Avenue · Bethesda, MD 20814

## • FLOOR PLANS

Suite 101 · 437 SF



Suite 204 · 1,386 SF



Suite 300 · 1,492 SF

